



# GMT MONTHLY MEMBERSHIP PROGRESS REPORT

Results as of: 6/30/2020

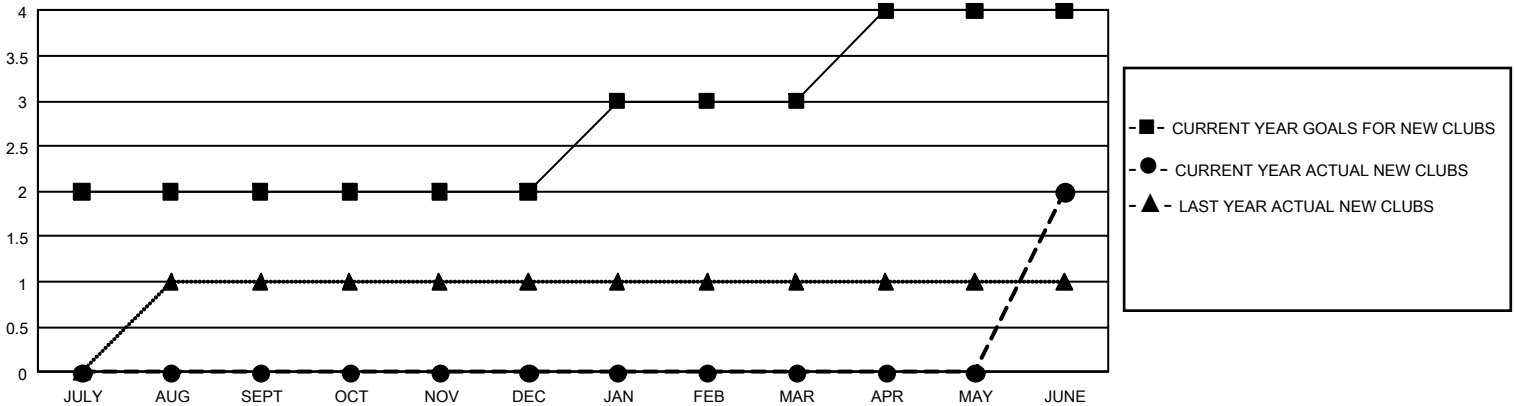
## GMT Constitutional Area 7, Group B

GMT: OPEN

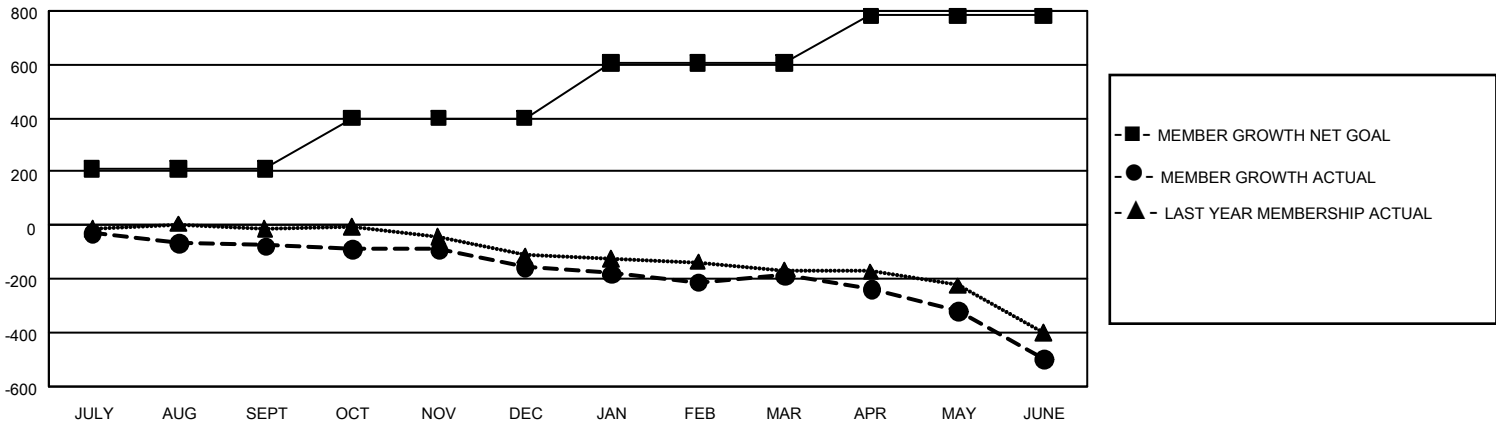
REPORT DOES NOT INCLUDE CLUBS IN UNDISTRICTED AREAS.

Clubs				Members			
RESULTS FOR 2019-2020				RESULTS FOR 2019-2020			
QUARTER	NEW CLUB GOAL	NEW CLUBS	DROPPED CLUBS	QUARTER	MEMBER GROWTH NET GOAL	MEMBER GROWTH ACTUAL	DROPPED MEMBERS ACTUAL (including transfers)
JULY/AUG/SEPT	6	0	1	JULY/AUG/SEPT	633	182	227
OCT/NOV/DEC	0	0	0	OCT/NOV/DEC	570	158	219
JAN/FEB/MAR	3	0	3	JAN/FEB/MAR	618	157	175
APR/MAY/JUNE	3	2	3	APR/MAY/JUNE	525	144	430

GOALS AND ACTUAL NEW CLUBS CUMULATIVE



GOALS AND ACTUAL MEMBERS CUMULATIVE



<b>DROPPED CLUBS: 7</b>	192 CLUBS OF 344 ADDED 1 OR MORE NEW MEMBERS	<b>GENDER DISTRIBUTION</b>	
		MALE            6,142 (70.36%)	FEMALE        2,587 (29.64%)
<b>DROPPED MEMBERS</b>		<b>TOTAL FAMILY UNIT MEMBERS</b> 747	
DECEASED                    165	<a href="#">CLICK HERE FOR CUMULATIVE MEMBERSHIP DATA</a>	<b>FAMILY MEMBERS PAYING HALF DUES</b> 379	
CLUB CANCELLED            43			
OTHER                        841			
<b>TOTAL</b> 1,049			